

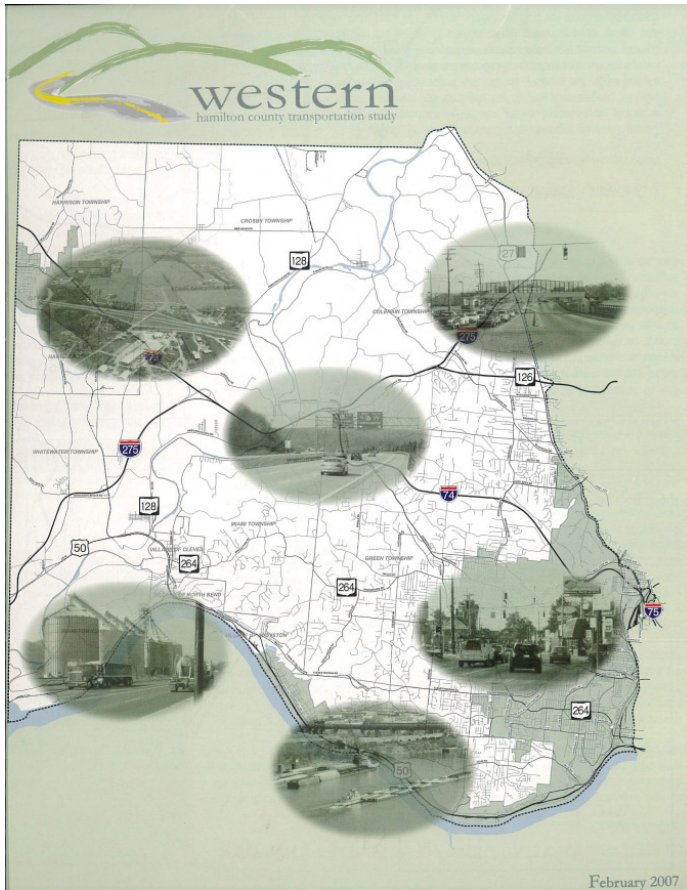


WESTWOOD NORTHERN BLVD.
& NORTH BEND ROAD

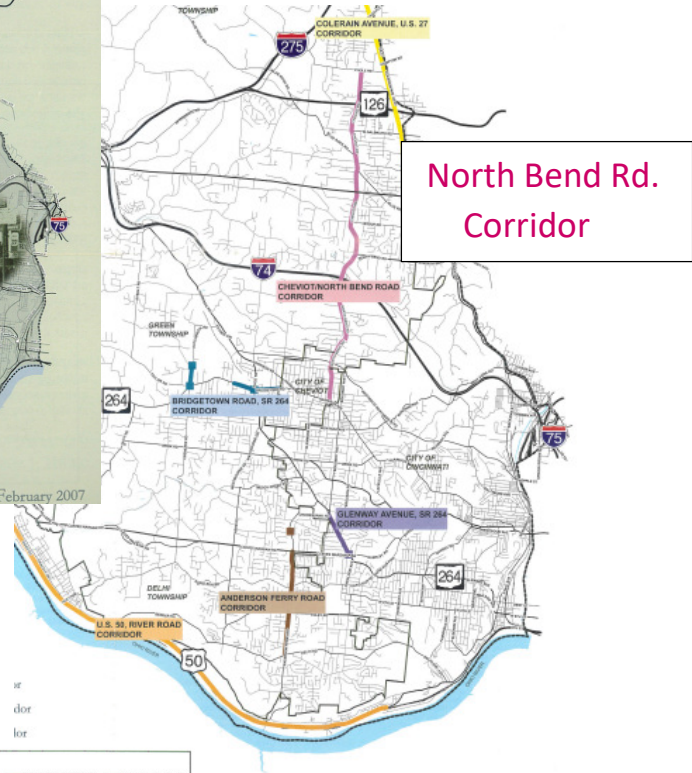
INTERSECTION
IMPROVEMENT
PROJECT

Hamilton County Transportation Improvement District

January 24, 2022



Western Hamilton County Transportation Study OKI/2007



EVALUATION MATRIX

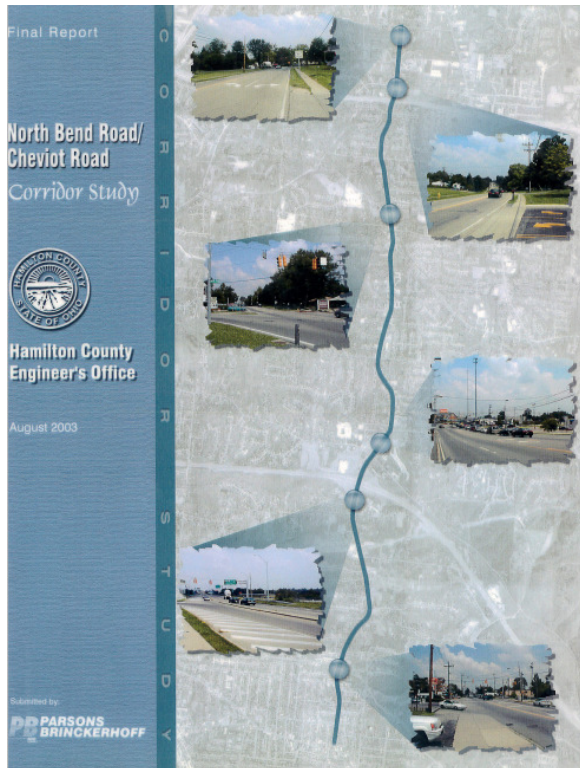
ROADWAY / INTERSECTION

| Project | Jurisdiction | Project Area | Lead Entity Responsible | Total Score | Project Description |
|---------|---|---|--|-------------|--|
| 1 | Coleman Avenue Cincinnati (portion) Green Tap (portion) | Key Road to Springdale Road | City of Cincinnati and Hamilton County Engineers | 76 | Access Management Study, Signal System Monitoring, Road Widening As Parcel Redevlop |
| 2 | Cheviot Road Green Tap (portion) | Jessup Road to Poole Road | Hamilton County Engineers | 78 | Access Management, Traffic Calming, Reconstruct Cheviot/Sike Rock Intersection, Progressive Signal System, Add Lanes to Approach and Medians at Intersection |
| 3 | Coleman Avenue Green Tap | Cross County Highway to Struble Road | Hamilton County Engineers | 73 | Continued Implementation of Corridor Planning Study, Subsections 3-4 (Access Management) |
| 4 | Coleman Avenue Green Tap | Springdale Road to Reasens Drive | Hamilton County Engineers | 73 | Signal Timing, Lane Addition Near Cemetery, Service Roads |
| 5 | Bridgetown/Glenway/Race Green Tap | Intersection | Hamilton County Engineers | 71 | Signal Timing, Lane Addition, Check Intersection, Continuous Flow Intersection |
| 6 | Bridgetown/Taylor/Elmwood/ Harrison | Intersection/Corridor | Hamilton County Engineers | 71 | Signal Timing, Lane Addition - Includes Intersection of Elmwood/Harrison to the North |
| 7 | Glenway Avenue Cincinnati | SR 264/Cookshank to Olives Warsaw Road | City of Cincinnati | 71 | Restrict Left Turns, Widen to 5 Lanes, Improve Intersections at Glenway Avenue/Prosperity Plaza with Right-of-Way |
| 8 | US 50 Cincinnati | 6th Street Viaduct to Village of Adlyston | City of Cincinnati | 71 | Add One Lane Each Direction on Widen Lanes and Add a Center Turn Lane, Eliminate Nearest Street Intersection, Straighten Curves in 6th Street Viaduct Area |
| 9 | Anderson Ferry Road Delhi Tap | 7th Plus to Olives Warsaw Road | Hamilton County Engineers | 67 | Conduct Corridor Study, Eliminate North End of Gas Station on Anderson Ferry, Provide Slowdowns on Both Sides of Road, Add Lanes at Selected Locations |
| 10 | Cheviot Road/North Bend Road Green Tap (portion) | West Fork Road to Poole Road | Hamilton County Engineers | 65 | Addition of Lane at selected locations, Improve Garbath Road Intersection with Turn Lanes, Left Turn Approaches at Signalized Intersections |
| 11 | Bridgetown Road Cheviot (portion) | Moondge Drive to Harrison Avenue | City of Cheviot | 67 | Widen Road, Improve Intersections at Harrison Avenue and Glenway/Race Road |
| 12 | North Bend Road Green Tap | Riverside Road to Edgewood Drive | Hamilton County Engineers | 67 | Access Management, Sidewalk on East Side Intersection Improvement at Reemelin |
| 13 | Glenway Avenue Green Tap (portion) | Bridgetown Road to Work Road | Hamilton County Engineers | 65 | Access Management Study, Improve Intersections of Bridgetown, Lawrence, Wedbourne and Work, Eliminate Residential Street Access at Sunny, Karns and Childs |
| 14 | Boudinot Avenue Cincinnati | Glenway Avenue to Harrison Avenue | City of Cincinnati | 65 | Restrict On-Street Parking as Needed, Signal System Monitoring, Improve Intersections of Harmon, Mustang, and Work, Complete Existing Progressive Signal System |
| 15 | Harrison Avenue Cheviot | Bridgetown Road to Boudinot Avenue | City of Cheviot | 64 | Conduct Corridor Study, Restrict Mid-Block Left Turns, Left Turn Lanes at Key Intersections, Improve Intersections at North Bend, Boudinot and Bridgetown |
| 16 | Race Road/Hessmans Road Green Township | Southwestern Intersection | Hamilton County Engineers | 61 | Realignment of Roads |
| 17 | Queen City Avenue Cincinnati | Western Hills Viaduct to White Street | City of Cincinnati | 59 | Increase Turning Radius on Side Streets, Removal of On-Street Parking as Needed |
| 18 | Road Road Green Tap | 1st to Westman | Hamilton County Engineers | 58 | Widen Road and Access Management |
| 19 | New Haven Road City of Hamilton | I-74 to Harrison | City of Hamilton | 58 | Continuation of Road Widening from Bridge |
| 20 | North Bend/Cheviot Road Green Tap | Harrison Avenue to Reemelin Road | Hamilton County Engineers | 58 | Access Management Study, Sidewalk on Both Sides of Street, Left Turn Approaches at Signalized Intersections |
| 21 | Dahl Pile Cincinnati (portion) Delhi Tap (portion) | Fairbanks Avenue to Greenwell Avenue | City of Cincinnati and Hamilton County Engineers | 57 | Restrict On-Street Parking During Business Hours as Needed, Reconstruct Dahl/Fairbanks and Greenwell Intersections, Eliminate Parking on One Side of Street |
| 22 | Harrison/Race Green Tap | Intersection | Hamilton County Engineers | 57 | Signal Timing, Lane Addition |
| 23 | Harrison Avenue City of Hamilton | Harrison Avenue | City of Hamilton | 57 | On-Street Parking Limits, Signal Timing, Road Realignment |
| 24 | Elmwood Road Green Tap (portion) | York Road to Rock Road | Hamilton County Engineers | 56 | Restrict On-Street Parking as Needed, Right-of-Way, Right-of-Way, Drive Lane and Rapid Run, Right-of-Way, Drive Lane, Widen Road to Three Lanes between Work and Rapid Run |
| 25 | 1740-275 Overlap Whitewater Tap (portion) | 1740-275 Overlap | Ohio Department of Transportation | 54 | Reconfiguration of Eastern Interchange, Lane Addition |

Legend
Regional Councils Project Profiles
Cincinnati Avenue, U.S. 275, Center
Cheviot North Bend Corridor
Bridgetown Road, SR 264, Center
Glenway Avenue, SR 264, Center
Anderson Ferry Road Corridor
U.S. 50, River Road, Center



THE WESTWOOD
NORTHERN BLVD. &
NORTH BEND ROAD
INTERSECTION WAS
IDENTIFIED AS A TOP 25
PRIORITY - *COMING IN*
@ # 20 OVERALL



Analysis of the intersection began with the 2003 HCEO North Beed Road Study/ Cheviot Road Study.

Conditions at the intersection have remained largely unchanged since 2003.

- Redevelopment at the intersection
 - *(UDF 2017 @ SE corner)*
 - *Upscale Landscaping 2019 @ NE corner*
- Mercy Hospital (opened in 2014)



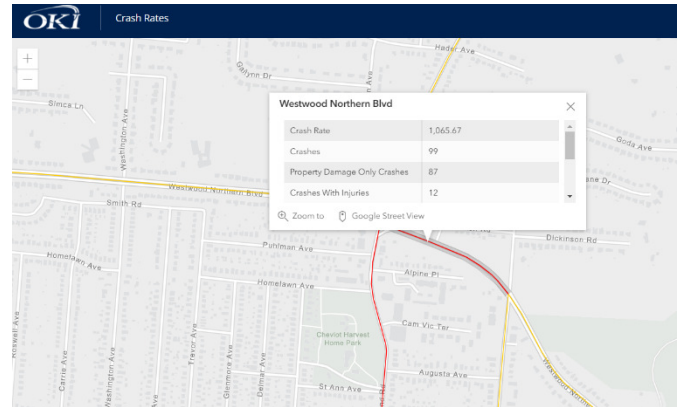
Project Highlights

- 2018 Traffic Counts - 15,905 on Westwood Northern / 9,908 on North Bend south of the intersection.
- Studies were undertaken in 2003, and 2013, outlining safety and capacity issues of the North Bend Road Corridor, including this intersection
- TEC Engineering evaluated those studies, and assessed preliminary recommendations based upon crash data from 2013-2015
- LOS of intersection was predicted to be “D” in 2032.
- Southbound approach in the PM has high volumes and must be remedied
- Overall intersection was very high in number of crashes, and #8 in the County in 2013

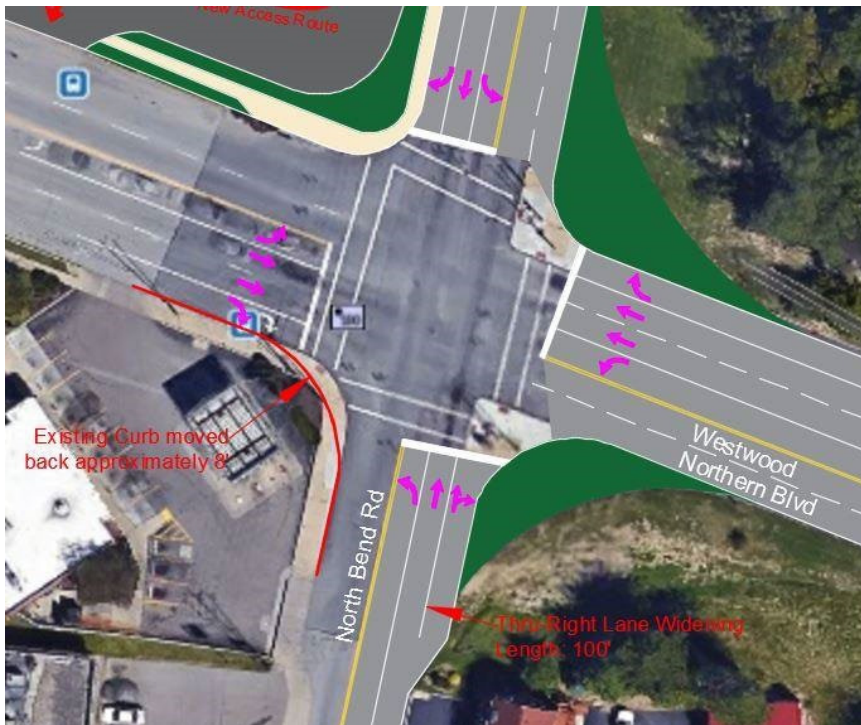


2013 – 2015 Distribution of Crash Types

| Type of Crash | Number | % |
|-----------------------|-----------|---------------|
| Rear End | 40 | 44.0% |
| Left Turn | 17 | 18.7% |
| Angle | 15 | 16.5% |
| Sideswipe - Passing | 7 | 7.7% |
| Backing | 4 | 4.4% |
| Fixed Object | 4 | 4.4% |
| Sideswipe - Meeting | 2 | 2.2% |
| Parked Vehicle | 1 | 1.1% |
| Other - Non Collision | 1 | 1.1% |
| Total | 91 | 100.0% |



Potential Improvements



Project Location Maps

